

# List of content



**03**

**Foreword: Mr. Patrick Arendt  
Founder and C.E.O Panama Tours  
and Scuba S.A.**

**04**

**All Day Tours:  
1 activity/ destination**

- Panama Canal Activities page 5-7
- Panama Cultural Activities page 8-11
- Panama Beach Activities page 12-14
- Panama Experiences page 16-19
- Panama Sport Activities page 15
- Panama Social Activities page 20

**21**

**Expeditions in Panama - 6 different tours in PANAMA**

- Expedition Tour 1 ..... page 22  
Embera Quiera - Agua Clara locks
- Expedition Tour 2 .....page 23  
Miraflores locks - Casco Viejo
- Expedition Tour 3 .....page 24  
Gamboa Monckey Islands - Casco Viejo
- Expedition Tour 4.....page 25  
Portobelo - Isla Maimey
- Expedition Tour 5 .....page 26  
Agua Clara locks -Casco Viejo
- Expedition Tour 6 .....page 27  
Embera Quiera - Gamboa Monkey Islands

**28**

**GOLF  
EXPERIENCE**

**29**

**PRICE LIST  
Day Tours**

**30**

**PRICE LIST  
Expeditions Tours 1-6**



# OUR DAY TOURS IN PANAMA

CULTURE, ADVENTURE, FUN AND MORE

PROGRAM

## Panama Canal Activities

1. Miraflores Locks - Pacific side
2. Agua Clara Locks - Atlantic side
3. Panama Canal Partial Transit Tour



## Panama Cultural Activities

1. Casco Viejo Panama City
2. Fort San Felipe - Portobelo
3. Fort San Lorenzo - Colón
4. Tribe Emberá Quiera - Colón



## Panama Beach Activities

1. Isla Grande / Isla Maimbey - Caribe
2. Isla Taboga - Pacific
3. Isla Contadora - Pacific



## Panama Sport Activities

1. Snorkeling tour in Portobelo - Caribe
2. Scuba Diving in Portobelo - Caribe



## Panama Experience

1. Whale watching - Isla Contadora Pacific
2. Guided Jungle Tour
3. Horse Riding on the beach / rivers
4. Gamboa Rainforest Canal tours-Monckey Islands

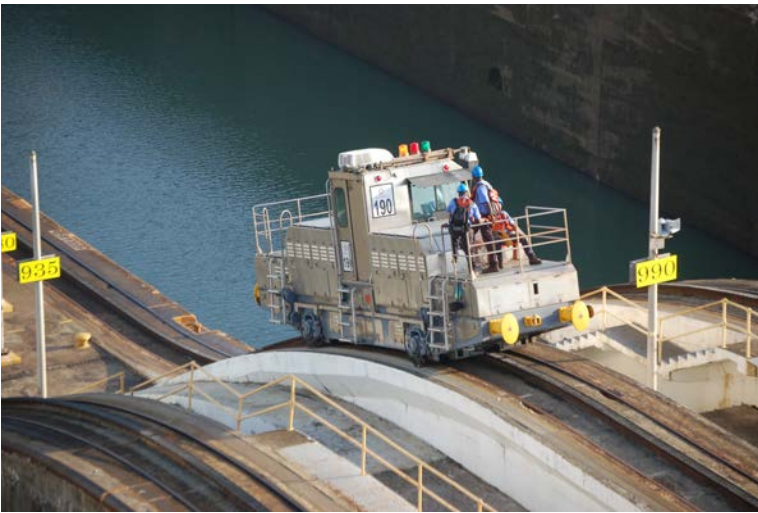
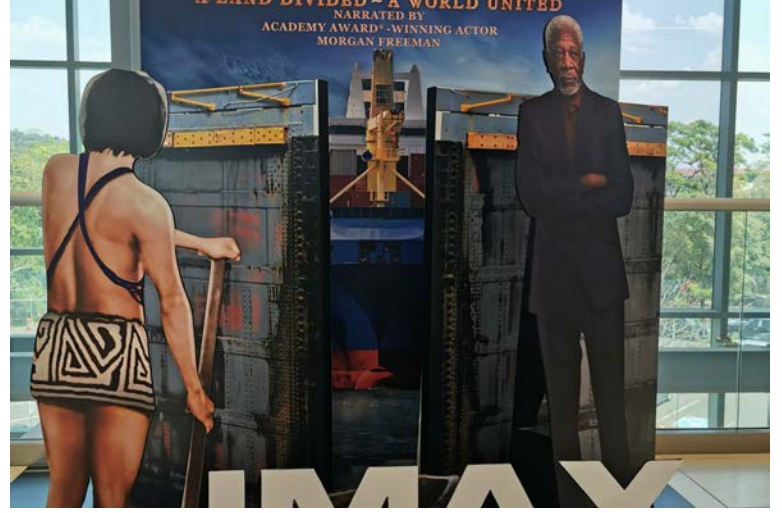


## Panama Social Activities

1. Visit cool bars in Casco Viejo
2. Highlight the Roof Tops in Panama



# Panama Canal Miraflores Locks



## INFORMATION

The Miraflores Visitor Center is a space where you can live a unique Panama Canal experience. In one place you will find different activities to learn and fully enjoy the Panama Canal. Do you want to see how the ships transit through the Panama Canal locks? The building has two levels for observing the Canal's operation, the passage of ships through the locks and how they move. It is the ideal place to take pictures and to hold memories of this engineering marvel. Transits of ships may vary depending on schedule. We will also visit the new IMAX 3 D Cinema.

## NOTES

PRICE: see price list A  
DURATION: 2-3 hours (Time may vary)  
Minimum: 10 PAX  
Maximum: 100 PAX  
Recommended :  
Comfortable clothes, shoes, sun glasses, sun protection and your camera.  
Requirements: -  
Includes:  
Round-trip transportation, entrance fees to the Miraflores Visitor Center, shopping opportunities at the Canal shopping Store - Soft drinks  
Guide : English speaking  
on demand : German or French



# Panama Canal

## AGUA CLARA



### INFORMATION

Located on the Atlantic side, near Colon City, the Agua Clara Visitor Center is a place where the Panama Canal has made it clear that both its legacy and its grandeur will continue to bear fruit for the world. With an unparalleled view, this place is waiting for you and all those who want to enjoy a pleasant experience enriched with interesting facts, but especially by being part of the history of the route that unites the world. The center offers a breathtaking panoramic view that contrasts two particular scenarios that generate mixed feelings. On one side you will find the famous Gatun Lake, where cargo ships or other vessels transit every day, while on the other side, but from a different perspective, you will be amazed by the view of the expansion works. Beyond its surprising technology or colossal machinery, you will be astonished by the work of thousands of people, who with discipline and determination head towards the same goal to make Panama stronger and Panamá worthy of admiration.

### NOTES

PRICE: see price list A

DURATION: 2-3 hours (Time may vary)

Minimum: 10 PAX

Maximum: 100 PAX

Recommended :

Comfortable clothes and Shoes, Hat,  
Sun block, Sunglasses, camera, Umbrella  
or raincoat and

Money for souvenirs

Requirements:-

Includes:

Round-trip transportation and refreshments  
soft drinks

Guide: English speaking

on demand French and German



# Panama Canal PARTIAL TRANSIT TOUR



## Southbound

Our tour starts at the Flamenco Resort and Marina. Passengers board motor coaches for a 45-minute ride to the town of Gamboa where the Panama Canal Dredging Division is located. Once in Gamboa, passengers board the Pacific Queen to start the water portion of the tour. The Panama Canal partial transit tour begins at the north end of the Gaillard cut, where the Chagres River flows into the canal. The Gaillard Cut (also known as Culebra Cut because its curves resemble a snake) is one of the main points of interest for visitors because it was carved through the Continental Divide and this section of the Canal is full of history and geological value. The Pacific Queen will travel the Cut's 13.7 kilometers on the way to Pedro Miguel Locks. As you transit the Cut you will be able to appreciate the continuous maintenance that this area requires, because it is very susceptible to landslides. Before reaching the Pedro Miguel Locks at the southern end of the Cut, you will be able to view the Centennial Bridge which crosses over the Canal. Next, the Pacific Queen will enter Pedro Miguel Locks, which is one of the two sets of locks on the Pacific side, and here the vessel is lowered 9 meters in one step. You will then enter Miraflores Lake, which is a small artificial body of fresh water that separates Pedro Miguel from Miraflores Locks, the latter being the final set of locks before reaching the Pacific Ocean. At Miraflores Locks the vessel is lowered 18 meters in two distinct steps.

Once in the Pacific Ocean the vessel will sail to the beautiful Flamenco Marina where passengers disembark. On the way to Flamenco, you will pass under the Bridge of the Americas, and later, you will be able to admire the Bay of Panama and Panama City's splendorous skyline.

INFORMATION

NOTES

PRICE: see price list A  
 DURATION: 2-3 hours (Time may vary)  
 Minimum: 10 PAX  
 Maximum: 100 PAX  
 Recommended :  
 Comfortable clothes and Shoes,Hat,Sun  
 block,Sunglasses  
 Camera,Umbrella or raincoat and  
 Money for souvenirs  
 Required: -  
 Includes:  
 Round-trip transportation, Boarding Pass  
 including buffet. Not included : all drinks on  
 board. Boat Guide on board (English speaking)



# Panama Cultural Activities

## CASCO VIEJO



### INFORMATION

#### Casco Viejo

the old town of San Felipe with its Casco Viejo neighborhood, the archaeological site of the first city before its destruction by Henry Morgan in 1671 (again! the English obstruction that already appeared in Providencia and PortoBello) and the modern city with its skyscrapers and their hectic life. The city has a very diverse modern and ancient architecture. The most emblematic buildings are the Cathedral, the Wall of Las Bovedas, the Monuments of Bolivar Square... The color of the buildings gives splendor to the whole old town.

### NOTES

PRICE: see price list A

DURATION: 2-3 hours (Time may vary)

Minimum: 10 PAX

Maximum: 100 PAX

Recommended :

Comfortable clothes and Shoes, Hat,  
Sun block, Sunglasses, camera, Umbrella  
or raincoat and

Money for souvenirs

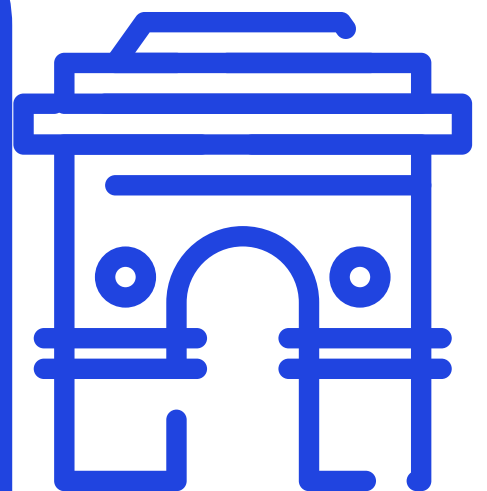
Requirements:-

Includes:

Round-trip transportation and refreshments  
soft drinks

Guide: English speaking

on demand French and German



# Panama Cultural Activities Fort San Felipe



## INFORMATION

We will visit the Unesco cultural heritage of Portobelo - the fortifications of the conquistadors and the famous church with the Cristo Negro. Portobelo is a small tourist town of about 5,000 inhabitants located 30 km east of the beginning of the Panama Canal in Colón, on the Caribbean coast of the Central American state of Panama. During the Spanish colonial period, Portobelo was an important port protected by powerful forts. The bay where the city is located today was discovered on November 2, 1502 by Christopher Columbus on his fourth voyage and named puerto bello (Catalan: porto belo, German: beautiful port). The port was actively used even before its official establishment. One of the two lines of the Spanish silver fleet left Spain every August from 1561 for this port, where the Camino Real de Castilla de Oro ended. This repeatedly prompted pirates to attack the port. In 1596, before the official foundation of the city, the English corsair Francis Drake died of fever while trying to conquer and plunder the port.

The city was finally founded in 1597 and in honor of the King of Spain Philip II. San Felipe de Portobelo. As early as 1601, the English pirate William Parker tried to conquer the city. In July 1668, the privateer Henry Morgan seized the city by attacking it by land. After robbing the Townspeople, he extorted a substantial ransom from the Spanish authorities in Panama City, threatening to burn the city down before he and his men fled again. On November 20, 1739, in the first year of Jenkins' War of the Ear for Spanish rule in the West Indies region, i.e. the Caribbean, the British, led by Edward Vernon, destroyed all the Spanish military installations at Portobelo and thus captured one of the most important intermediate stations of the Spanish silver fleet.

## NOTES

PRICE: see price list A

DURATION: 2-3 hours (Time may vary)

Minimum: 10 PAX

Maximum: 100 PAX

Recommended :

Comfortable clothes and Shoes, Hat, Sun block, Sunglasses, camera, Umbrella or raincoat and Money for souvenirs

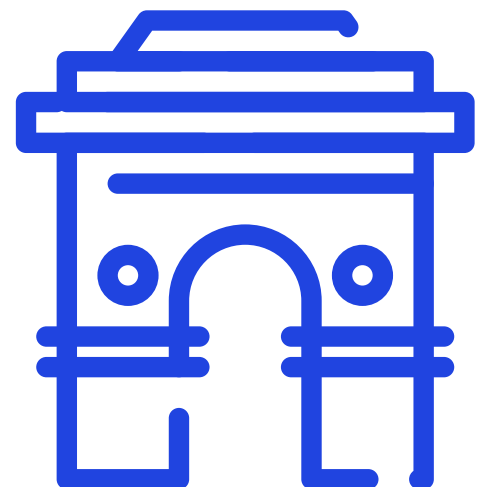
Requirements:-

Includes:

Round-trip transportation and refreshments soft drinks

Guide: English speaking

on demand French and German



# Panama Cultural Activities

## Fort San Lorenzo

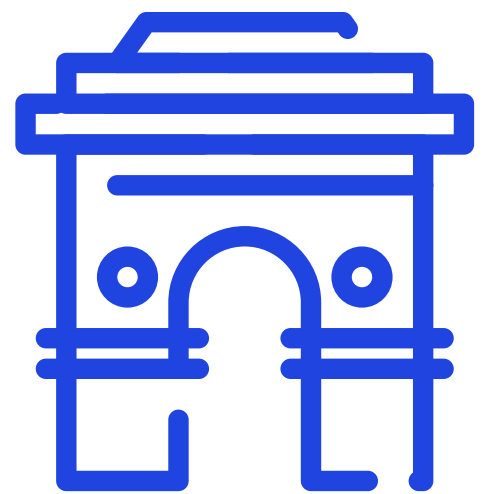


### INFORMATION

16th and 17th centuries: Discovery and fortification In 1502, during his fourth and final voyage, Christopher Columbus discovered the Chagres River. By 1534, the Monarchy of Spain had, following its conquest of Peru, established a rainy-season gold route over the isthmus of Panama—Camino Real de Cruces—using mule trains and the Chagres River. The trail connected the Pacific port of Panama City to the mouth of the Chagres, from whence Peru's plunder would sail to Spain's storehouses in the leading Atlantic ports of the isthmus: Nombre de Dios, at first; and, later, Portobelo. (The dry-season, overland route—the Camino Real—connected Panama City with those ports directly.) Attracted to the treasure, pirates began attacking Panama's coast around 1560. To protect the Atlantic terminus of Las Cruces Trail (Camino Real de Cruces), Spain built Fort San Lorenzo at the Chagres River's mouth. The work began in 1598 by order of King Philip II. From 1587 to 1599, the fortifications evolved into a sea-level battery[ and they were completed in 1601. The plans of the massive fortress were made by the Italian engineer Baptist Antonelli. The castle of San Lorenzo was built on top of a high reef, in a position that dominated the entrance of the Chagres River. In 1670, buccaneer Henry Morgan ordered an attack that left Fort San Lorenzo in ruins. He invaded Panama City the following year, using San Lorenzo as his base of operations. In the 1680s, the Spanish constructed a new fort 80 feet (24 m) above the water. Set on a cliff overlooking the entrance to the harbor, the fort was protected on the landward side by a dry moat with a drawbridge. During this time, the town of Chagres was established under the protection of the fort

### NOTES

PRICE: see price list A  
DURATION: 2-3 hours (Time may vary)  
Minimum: 10 PAX  
Maximum: 100 PAX  
Recommended :  
Comfortable clothes and Shoes, Hat,  
Sun block, Sunglasses, camera, Umbrella  
or raincoat and  
Money for souvenirs  
Requirements:-  
Includes:  
Round-trip transportation and refreshments  
soft drinks  
Guide: English speaking  
on demand French and German





# Panama Cultural Activities

## Tribe EMBERA QUIERA - Colón



### INFORMATION

Your adventure begins on the shores of Lake Alajuela, where you will meet the Embérra people with their homemade canoe.

You will take a 30-60 minute boat ride (time depends on the water level in the river). You will walk through the pristine rainforest and see many birds such as egrets, osprey, possibly wild toucans and parrots as well as turtles, possibly a caiman and if you are lucky a sloth, an otter or monkeys from the boat. If the water level is high enough, you can take a quick dip in a local waterfall on the way to the village.

Upon arrival in the village you will be greeted with a traditional musical greeting and treated to a fascinating presentation of the history, culture and life of the Embérra people in a typical community hut. After the presentation, you will be served a delicious lunch of fresh fish, fried plantains and local fruits.

After lunch (included), they have the option of a 20-30 minute hike with one of the village elders to learn more about their medicinal plants. Then, in the village, you will have time to view or purchase the exquisite hand-woven baskets, plates or masks made of palm fiber or cocobolo (rosewood) wood or carvings of tagua nuts, get a temporary tattoo of the culture and swim in the river, play with the Embérra children, interact with the villagers or take photos.

### NOTES

PRICE: see price list A

DURATION: 2-3 hours (Time may vary)

Minimum: 10 PAX

Maximum: 50 PAX

Recommended :

Comfortable clothes and Shoes, Hat, Sun block, Sunglasses, camera, Umbrella or raincoat and

Money for souvenirs

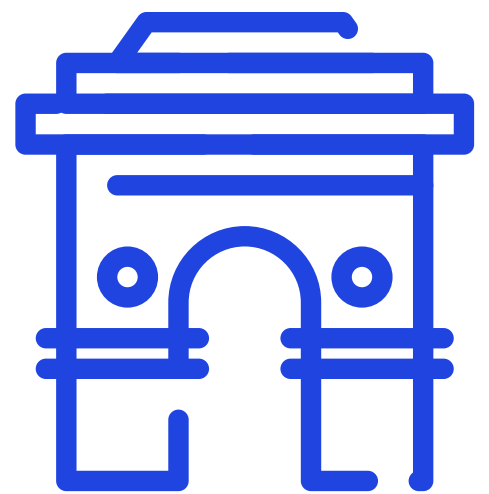
Requirements:-

Includes:

Round-trip transportation and refreshments soft drinks

Guide: English speaking

on demand French and German



# Panama

## BEACH ACTIVITIES

### Isla Grande - Maimey- Mangoves



INFORMATION

#### ISLA GRANDE - maimey and mangroves

History and beauty abound on Panama's Atlantic coast, and this full-day tour allows visitors to explore the region. Learn about the pirates, including Henry Morgan and Francis Drake, who looted here. Enjoy time at the beach. And explore the city of Portobelo, a crucial port for the Spanish conquistadores, including the indigenous figure of Christ in the church of San Felipe.. We will pass through the mangroves and Isla Maimey

NOTES

PRICE: see price list A

DURATION: 2-3 hours (Time may vary)

Minimum: 10 PAX

Maximum: 100 PAX

Recommended :

Comfortable clothes and Shoes, Hat,  
Sun block, Sunglasses, camera, Umbrella  
or raincoat and

Money for souvenirs

Requirements:-

Includes:

Round-trip transportation and refreshments  
soft drinks

Guide: English speaking

on demand French and German



# Panama

## BEACH ACTIVITIES

### Isla Taboga



#### ISLA TABOGA

In the 16th century, Vasco Núñez de Balboa was the first Spaniard to set foot on the island and named it Isla de San Pedro. The island got the name Taboga later. This derives from the indigenous word aboga, which means "a lot of fish".

The village of San Pedro was founded in 1524 by Hernando de Luque, the provost of Panama. The village was built around the church of the same name, Iglesia San Pedro, which is said to be the second oldest in the western hemisphere. With the Capitulación de Toledo, a treaty in which the Spanish king authorized Francisco Pizarro to conquer Peru, Pizarro was also appointed governor of the flower island.

In the 17th century, the island became a popular hideout for pirates. After the pirate Henry Morgan destroyed Panamá la Vieja in 1671, he sent his pirates towards Taboga with orders to plunder and then burn the island. In 1998, during the construction of a new hospital, 1000 silver coins were found which were dated to the 17th century.

In the 19th century the island became a strategic point for shipping. Thus, Taboga was used as a port by the Pacific Steam Navigation Company, which installed a shipyard for boats there. The company brought hundreds of Irish people to the island to work in the shipyard. Even today you can examine the tombstones with the Anglo-Saxon names. In addition, the island played an important role in the construction of the Panama Canal. In 1887 the impressionist Paul Gauguin spent some time on the island on his way to Martinique and Tahiti.

PRICE: see price list A

DURATION: 2-3 hours (Time may vary)

Minimum: 10 PAX

Maximum: 100 PAX

Recommended :

Comfortable clothes and Shoes, Hat,  
Sun block, Sunglasses, camera, Umbrella  
or raincoat and

Money for souvenirs

Requirements:-

Includes:

Round-trip transportation and refreshments  
soft drinks

Guide: English speaking

on demand French and German



# Panama BEACH ACTIVITIES Isla Contadora



INFORMATION

## Contadora and the Pearl Islands

Archipiélago de las Perlas, (the pearls islands), named for the large pearls that were found in its waters. The islands are comprised of 90 named and over 100 unnamed islets, each surrounded by travel magazine-worthy, white sand beaches and turquoise waters.

Contadora was used by the Spanish conquistadors for making a stop in order to take inventory of booty prior before returning to Spain. Hence the name contador means counter or bookkeeper in Spanish.

Contadora was developed in the 1960s into an exclusive get away for the rich and famous people. Like John Wayne, Elisabeth Taylor, Christian Dior, Julio Iglesias, the Shah of Persia, Jimmy Carter also others decided to make it their home. Some of them stayed only for a few days, some of them for years.

Today the island has a complete infrastructure, recently paved roads, reliable electricity and water, a medical center, restaurants, supermarkets, gas stations, a police station, an airport and a ferry service.

Isla Contadora is the most frequented island of the Pearl Islands. It has been the base for the famous US and European TV Show „Survivor“ for years.

NOTES

PRICE: see price list A

DURATION: 2-3 hours (Time may vary)

Minimum: 10 PAX

Maximum: 100 PAX

Recommended :

Comfortable clothes and Shoes, Hat,  
Sun block, Sunglasses, camera, Umbrella  
or raincoat and

Money for souvenirs

Requirements:-

Includes:

Round-trip transportation and refreshments  
soft drinks

Guide: English speaking

on demand French and German



# Panama SPORT ACTIVITIES PORTOBELO - CARAIBES



## Information

### DIVE SITES:

Given dive sites are very close and travel times are very short, we generally try to head out of port around 9:00 am. If you're not staying on site and need transportation, just let us know. After you're secured on the boat we head out to the selected dive site for the first dive of the day. After the morning dive, since the sites are so close, you have your choice of heading back to the facility for lunch and rest or we can take you to an island beach to break for snacks allowing enough time to stretch your legs, explore a bit and even do some quick snorkeling if you'd like. After lunch/snacks we board the boat again and head out to a different site location for the afternoon dive before heading back to port.

Most dive sites are a 5-10 minute boat ride away. 2 Diver minimum required. \$120/2 tank dive (\$20

## NOTES

PRICE: see price list A

DURATION: 2-3 hours (Time may vary)

Minimum: 10 PAX

Maximum: 100 PAX

Recommended :

Comfortable clothes and Shoes, Hat,  
Sun block, Sunglasses, camera, Umbrella  
or raincoat and

Money for souvenirs

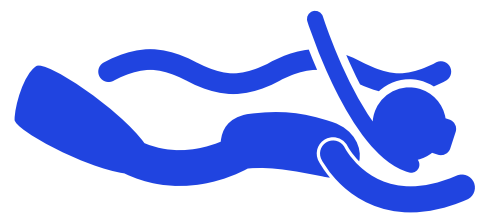
Requirements:-

Includes:

Round-trip transportation and refreshments  
soft drinks

Guide: English speaking

on demand French and German



# Panama EXPERIENCE WHALE WATCHING 15.07. - 15.09



## INFORMATION

### ISLA CONTADORA

Whale watching in the Pearl Islands is one of the highlights for tourist. But not only for tourist since many biologists study the great humpback whales here. Panama and especially the waters around the Pearl Islands is the only place in the world that attracts humpback whales from the northern and southern hemisphere to breed and feed. Whale watching in the Pearl Islands. Whale watching around the Pearl Islands is only possible during the winter migration of the whales. Lucky winter kicks in on different months a year in the southern and northern hemisphere. The best months to spot whales are probably June till October since it is winter in the southern hemisphere and there are a lot more whales then in the northern part. An estimated 2000-2500 southern humpback whales visit the Pearl Islands during these months. But don't worry during November to march you can spot the northern whales in the sea. But there are only 300-500 visiting the Pearl Islands. When you are going whale watching around the Pearl Islands the chance that you see a whale calf is very high. The whales use the calm warm waters of the tropics to breed and give birth. We can tell you this, after watching these magnificent creatures of the Sea you will never forget them. Whale watching is a must do activity when visiting the Pearl Islands!

## NOTES

PRICE: see price list A

DURATION: 2-3 hours (Time may vary)

Minimum: 10 PAX

Maximum: 25 PAX

Recommended :

Comfortable clothes and Shoes, Hat, Sun block, Sunglasses, camera, Umbrella or raincoat and Money for souvenirs

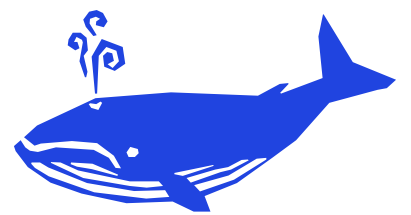
Requirements:-

Includes:

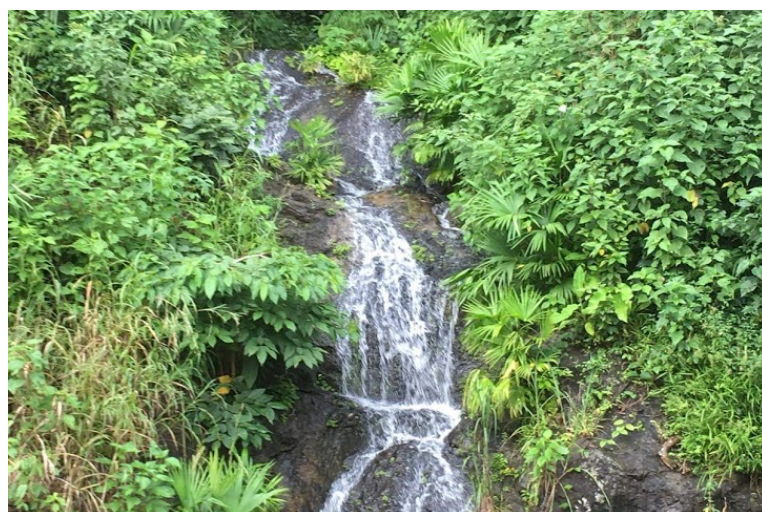
Round-trip transportation and refreshments soft drinks

Guide: English speaking

on demand French and German



# Panama EXPERIENCE JUNGLE TOUR IN NATIONAL PARC PORTOBELO



## Information

**Guided Jungle Tour in the National Parc of Portobelo. The tours will be from 2 hours up to 4-5 hours depending on your physical condition. You will be guided by experienced tour guides with many years of experience**

## NOTES

PRICE: see price list A

DURATION: 2-3 hours (Time may vary)

Minimum: 4 PAX

Maximum: 10 PAX

Recommended :

Comfortable clothes and Shoes, Hat,  
Sun block, Sunglasses, camera, Umbrella  
or raincoat and  
Money for souvenirs

Requirements:-

Includes:

Round-trip transportation and refreshments  
soft drinks

Guide: English speaking

on demand French and German



# Panama EXPERIENCE HORSE RIDING IN NATIONAL PARC OF PORTOBELO



## Information

Horse Riding in the National Parc of Portobelo. Welcome to one of our most wanted tours ☑  
100☑ satisfaction from all the participants!

Get in the rhythm, prepare your bag, open your spirit ☑

Enjoy your day, completely immersed in the green jungle of the Portobelo National Park.

Our lovely horses are trained for a safe riding experience and our tours are open to ages 12☑.

Do you want to see beaches, rivers or mountains?

3 different horseback tours available

## NOTES

PRICE: see price list A

DURATION: 6 hours (Time may vary)

Minimum: 2 PAX

Maximum: 5 PAX

Recommended :

Comfortable clothes and Shoes,  
Hat,Sun block,Sunglasses

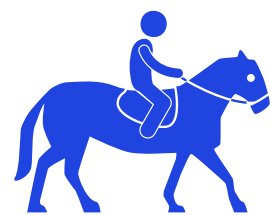
Camera,Umbrella or raincoat

Required: experience in riding

Includes:

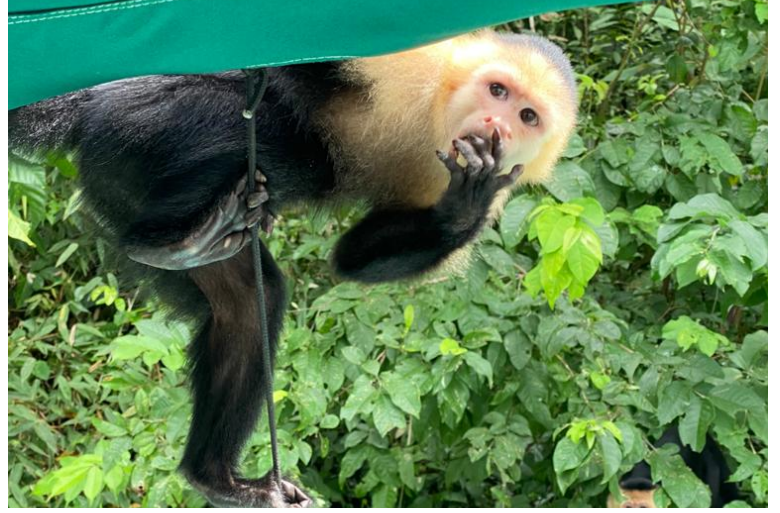
Round-trip transportation

+ - 4 hours guided tour





# Panama EXPERIENCE Gamboa - Monckey Islands



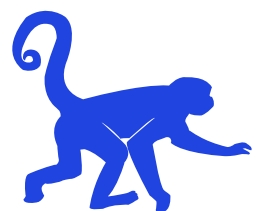
## Information

### Gamboa - Gatun Lake

As we take a boat ride towards Monkey Island, we will pass through the famous Panama Canal and encounter large ships. Your English speaking tour guide will talk about the history and importance of the Panama Canal and provide you with a lot of valuable information that is not so well known. Our English speaking guide will take you to Monkey Island where you will be greeted by 3 different species of monkeys ready to hop on your boat to eat bananas.

## NOTES

PRICE: see price list A  
DURATION: 2-3 hours (Time may vary)  
Minimum: 6 PAX  
Maximum: 50 PAX  
Recommended :  
Comfortable clothes and Shoes, Hat,  
Sun block, Sunglasses, camera, Umbrella  
or raincoat and  
Money for souvenirs  
Requirements:-  
Includes:  
Round-trip transportation and refreshments  
soft drinks  
Guide: English speaking  
on demand French and German



# Panama

## SOCIAL ACTIVITIES

### Cool Bars in Casco Viejo / Rooftops



INFORMATION

Craft Beers and Cocktail Abound in Panama City, Panama. Here's Where to Drink.

#### Pedro Mandinga Rum Bar

The best place in Panama City to immerse yourself in tropical bar bliss is at the Pedro Mandinga Rum Bar in Casco Viejo. From the upholstery to the glassware to the music, this place is designed to invoke swaying palms and caressing breezes. It works as do the rum cocktails made with award-winning Pedro Mandinga rums produced in Panama using raspadura unrefined sugar. The rums are produced by a family-run farm in the town of Chiriquí, which is distilled and then aged in American white oak bourbon barrels.

#### Buenas Pintas

If you want to try a selection of Panamanian craft beers alongside those from the U.S. and Europe, head to Buenas Pintas. Located in the Bella Vista area of the city, locals credit this place with having the biggest collection for artisanal beer in the Panama City.

El Faro has one of the best views and sits on the border of Casco Viejo and the skyscrapers of Panama City view a gorgeous view of both. They are famous for their seafood dishes, mojitos, and other rum-based drinks. The Panaviera is located on the 66th floor of the Ocean Sun Casino, part of the JW Marriott Hotel and has the best view of a city sunset. As you walk in, the doors open to an over-the-top infinity pool flowing over the cityscape. The rooftop opens at 5 pm and I recommend arriving at that time to catch the last glimpse of the sun going down over the hills.

NOTES

PRICE: see price list A  
 DURATION: 2-3 hours (Time may vary)  
 Minimum: 10 PAX  
 Maximum: 100 PAX  
 Recommended :  
 Comfortable clothes and Shoes, Hat,  
 Sun block, Sunglasses, camera, Umbrella  
 or raincoat and  
 Money for souvenirs  
 Requirements:-  
 Includes:  
 Round-trip transportation and refreshments  
 soft drinks  
 Guide: English speaking  
 on demand French and German





# OUR DAY TOURS IN PANAMA 6 EXPEDITIONS THE BEST OF PANAMA

**CULTURE, ADVENTURE, FUN AND MORE**

# EXPEDITIONS

## EXPEDITION TOUR 1

- 1. Embera Quiera Colón
- 2. Agua Clara Locks - Atlantic Side



## EXPEDITION TOUR 2

- 1. Miraflores Locks -Pacific Side
- 2. Casco Viejo - Old Panama



## EXPEDITION TOUR 3

- 1. Gamboa Monkey Islands
- 2. Casco Viejo - Old Panama



## EXPEDITION TOUR 4

- 1. World heritage site - Portobelo
- 2. Costa Arriba - Isla Maimey



## EXPEDITION TOUR 5

- 1. Agua Clara Locks - Atlantic Side
- 2. Casco Viejo - Old Panamá



## EXPEDITION TOUR 6

- 1. Gamboa Monkey Islands
- 2. Embéra Quiera Tribe



# Panama EXPEDITION

## DAY TOUR 1 : Emberá Quiera & Agua Clara Locks



EMBERA



AGUA CLARA



### INFORMATION

**EMBERA QUIERA VILLAGE** .You will take a 30-60 minute boat ride (time depends on the water level in the river). Upon arrival in the village you will be greeted with a traditional musical greeting and treated to a fascinating presentation of the history, culture and life of the Emberá people in a typical community hut. After the presentation, you will be served a delicious lunch of fresh fish, fried plantains and local fruits. After lunch, you will have the opportunity to take a 20-30 minute hike with one of the village elders to learn about their medicinal plants. Then, in the village, you will have time to view or buy the exquisite hand-woven objects.

**AGUA CLARA LOCKS** . We will visit the new locks in Colon. Located on the Atlantic side, near the city of Colón, there is a place where the Panama Canal has made it clear that both its legacy and its greatness will continue to bear fruit for the entire world. We refer to the Agua Clara Visitors Center. With an unparalleled view, this place awaits you and all those who like to spend a pleasant experience enriching themselves with extremely curious data but above all being part of this, the history of the route that unites the world. This new center is characterized by its impressive panoramic view that contrasts two particular scenarios, which when merged generate an unprecedented mix of sensations. On the one hand you will find the famous Gatun Lake, where day after day cargo ships or other types of vessels pass through this magnificent work of modern engineering; In the same way but in a somewhat different way, you will be struck by the view of the expansion work, which, beyond being amazed by its applied technology or machines of colossal sizes.

**PRICE: SEE PRICE LIST B**

**DURATION: 6 hours (Time may vary)**

**Minimum: 10 PAX**

**Maximum: 100 PAX**

**Recommended :**

**Comfortable clothes and Shoes,Hat,Sun block,Sunglasses**

**Camera,Umbrella or raincoat and**

**Money for souvenirs**

**Requirements:-**

**Includes:**

**Round-trip transportation, boat transfers, soft drinks.**

**Guide : English speaking. On demand German and French**

### NOTES

# Panama EXPEDITION DAY TOUR 2 : MIRAFLORES LOCKS & CASCO VIEJO



MIRAFLORES



CASCO VIEJO



INFORMATION

**MIRAFLORES LOCKS.** The Miraflores Visitors Center, a space where you can live a unique experience of the Panama Canal. In one place you will find different activities to get to know and enjoy the Panama Canal to the fullest. **TERRACES AND OBSERVATION GALLERIES** Do you want to see how the ships pass through the canal locks? The building has three levels that allow observing the operation of the canal, the passage of ships through the locks and their movement. The ideal place to take photos and have a memory of this marvel of engineering. We will also visit the new **IMAX 3 D Cinema**. The show will be about 45 minutes.

## CASCO VIEJO - OLD PANAMA

### Casco Viejo

the old town of San Felipe with its Casco Viejo neighborhood, the archaeological site of the first city before its destruction by Henry Morgan in 1671 (again! the English obstruction that already appeared in Providencia and PortoBello) and the modern city with its skyscrapers and their hectic life. The city has a very diverse modern and ancient architecture. The most emblematic buildings are the Cathedral, the Wall of Las Bovedas, the Monuments of Bolivar Square... The color of the buildings gives splendor to the whole old town.

NOTES

**PRICE: SEE PRICE LIST B**

**DURATION: 6 hours (Time may vary)**

**Minimum: 10 PAX**

**Maximum: 100 PAX**

**Recommended :**

**Comfortable clothes and Shoes,Hat,Sun block,Sunglasses**

**Camera,Umbrella or raincoat and**

**Money for souvenirs**

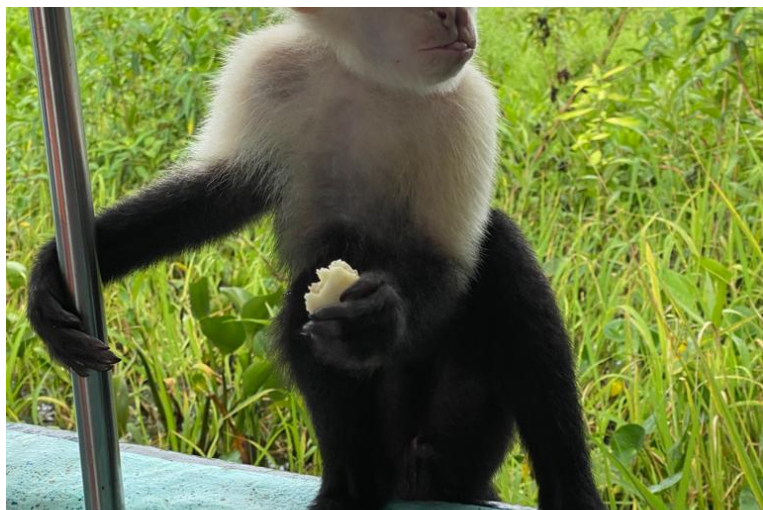
**Requirements:-**

**Includes:**

**Round-trip transportation, boat transfers, soft drinks.**

**Guide : English speaking. On demand German and French**

# Panama EXPEDITION DAY TOUR 3 : GAMBOA MONKEY ISLAND & CASCO VIEJO



GAMBOA



CASCO VIEJO



## GAMBOA - MONKEY ISLANDS

The origin of Gamboa is linked to the construction of the Panama Canal. The area was settled in 1911 with homes and cabins on the banks of the Chagres River for workers building the Panama Canal, which later housed the US military until 1999.

Gamboa where Lake Gatun meets the Chagres River. Located in the middle of the rainforest 32 kilometers from Panama City, it has become one of the main tourist destinations in the country thanks to its ecotourism.

We cross the Panama Canal by boat for about 3 km then enter the rainforest to see some tropical animals... (various monkeys, crocodiles, etc.)

Then we visit the Gamboa Rainforest Hotel where you can refresh yourself and have a fantastic view of the whole valley from the terrace.

## CASCO VIEJO - OLD PANAMA

Casco Viejo

the old town of San Felipe with its Casco Viejo neighborhood, the archaeological site of the first city before its destruction by Henry Morgan in 1671 (again! the English obstruction that already appeared in Providencia and PortoBello) and the modern city with its skyscrapers and their hectic life. The city has a very diverse modern and ancient architecture. The most emblematic buildings are the Cathedral, the Wall of Las Bovedas, the Monuments of Bolivar Square... The color of the buildings gives splendor to the whole old town.

**PRICE: SEE PRICE LIST B**

**DURATION: 6 hours (Time may vary)**

**Minimum: 10 PAX**

**Maximum: 100 PAX**

**Recommended :**

**Comfortable clothes and Shoes, Hat, Sun block, Sunglasses**

**Camera, Umbrella or raincoat and**

**Money for souvenirs**

**Requirements:-**

**Includes:**

**Round-trip transportation, boat transfers, soft drinks.**

**Guide : English speaking. On demand German and French**

# Panama EXPEDITION DAY TOUR 4 PORTOBELLO & COSTA ARRIBA - VENAS AZULES



PORTOBELLO



VENAS AZULES



INFORMATION

**PORTOBELLO** . We will visit the Unesco cultural heritage of Portobello - the Fortifications of the conquistadors and the famous church with the Cristo Negro. Portobello is a small tourist town of about 5,000 inhabitants located 30 km east of the beginning of the Panama Canal in Colón, on the Caribbean coast of the Central American state of Panama. During the Spanish colonial period, Portobello was an important port protected by powerful forts. The bay where the city is located today was discovered on November 2, 1502 by Christopher Columbus on his fourth voyage and named puerto bello (Catalan: porto belo, German: beautiful port). The port was actively used even before its official establishment. One of the two lines of the Spanish silver fleet left Spain every August from 1561 for this port, where the Camino Real de Castilla de Oro ended. This repeatedly prompted pirates to attack the port. In 1596, before the official foundation of the city, the English corsair Francis Drake died of fever while trying to conquer and plunder the port. The city was finally founded in 1597 and in honor of the King of Spain Philip II. San Felipe de Portobello. As early as 1601, the English pirate William Parker tried to conquer the city. In July 1668, the privateer Henry Morgan seized the city by attacking it by land. After robbing the ownspeople, he extorted a substantial ransom from the Spanish authorities in Panama City, hreatening to burn the city down before he and his men flew out again. On November 20, 1739, in the first year of Jenkins' War of the Ear for Spanish rule in the West Indies region, i.e. the Caribbean, the British, led by Edward Vernon, destroyed all the Spanish military installations at Portobello and thus captured one of the most important intermediate stations of the Spanish silver fleet. With the construction of the railway in 1855 and then the Panama Canal on the isthmus, the city lost its economic importance and is today a small tourist resort.

## VENAS AZULES AND BEACH TIME

Blue Veins. By a llancha there will be a boat ride from about 1 hours to the blue veins and to the Playa Blanca beach. A wonderful excursion throught the nature an the blue water. To end the day you will visit Playa Blanca, you will love it.

NOTES

**PRICE: SEE PRICE LIST B**

**DURATION: 6 hours (Time may vary)**

**Minimum: 10 PAX**

**Maximum: 100 PAX**

**Recommended :**

**Comfortable clothes and Shoes, Hat, Sun block, Sunglasses**

**Camera, Umbrella or raincoat and**

**Money for souvenirs**

**Requirements:-**

**Includes:**

**Round-trip transportation, boat transfers, soft drinks.**

**Guide : English speaking. On demand German and French**

# Panama EXPEDITION DAY TOUR 5 AGUA CLARA LOCKS & CASCO VIEJO



AGUA  
CLARA



CASCO  
VIEJO



**AGUA CLARA LOCKS** . We will visit the new locks in Colon. Located on the Atlantic side, near the city of Colón, there is a place where the Panama Canal has made it clear that both its legacy and its greatness will continue to bear fruit for the entire world. We refer to the Agua Clara Visitors Center. With an unparalleled view, this place awaits you and all those who like to spend a pleasant experience enriching themselves with extremely curious data but above all being part of this, the history of the route that unites the world. This new center is characterized by its impressive panoramic view that contrasts two particular scenarios, which when merged generate an unprecedented mix of sensations. On the one hand you will find the famous Gatun Lake, where day after day cargo ships or other types of vessels pass through this magnificent work of modern engineering; In the same way but in a somewhat different way, you will be struck by the view of the expansion work, which, beyond being amazed by its applied technology or machines of colossal sizes.

## CASCO VIEJO - OLD PANAMA

### Casco Viejo

the old town of San Felipe with its Casco Viejo neighborhood, the archaeological site of the first city before its destruction by Henry Morgan in 1671 (again! the English obstruction that already appeared in Providencia and PortoBello) and the modern city with its skyscrapers and their hectic life. The city has a very diverse modern and ancient architecture. The most emblematic buildings are the Cathedral, the Wall of Las Bovedas, the Monuments of Bolivar Square... The color of the buildings gives splendor to the whole old town.

**PRICE: SEE PRICE LIST B**

**DURATION: 6 hours (Time may vary)**

**Minimum: 10 PAX**

**Maximum: 100 PAX**

**Recommended :**

**Comfortable clothes and Shoes,Hat,Sun block,Sunglasses**

**Camera,Umbrella or raincoat and**

**Money for souvenirs**

**Requirements:-**

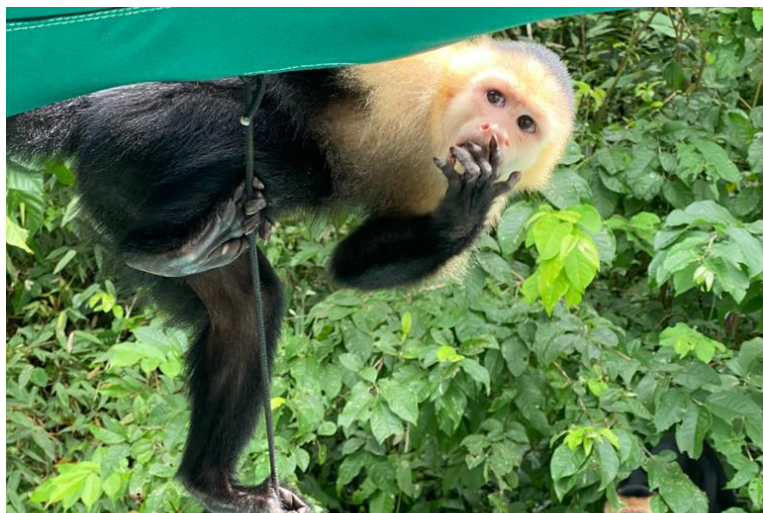
**Includes:**

**Round-trip transportation, boat transfers, soft drinks.**

**Guide : English speaking. On demand German and French**



# Panama EXPEDITION DAY TOUR 6 GAMBOA MONKEY ISLANDS & EMBERA QUIERA



GAMBOA



EMBERA  
QUIERA



## GAMBOA - MONKEY ISLANDS

The origin of Gamboa is linked to the construction of the Panama Canal. The area was settled in 1911 with homes and cabins on the banks of the Chagres River for workers building the Panama Canal, which later housed the US military until 1999.

Gamboa where Lake Gatun meets the Chagres River. Located in the middle of the rainforest 32 kilometers from Panama City, it has become one of the main tourist destinations in the country thanks to its ecotourism.

We cross the Panama Canal by boat for about 3 km then enter the rainforest to see some tropical animals... (various monkeys, crocodiles, etc.)

Then we visit the Gamboa Rainforest Hotel where you can refresh yourself and have a fantastic view of the whole valley from the terrace.

**EMBERA QUIERA VILLAGE** .You will take a 30-60 minute boat ride (time depends on the water level in the river). Upon arrival in the village you will be greeted with a traditional musical greeting and treated to a fascinating presentation of the history, culture and life of the Emberá people in a typical community hut. After the presentation, you will be served a delicious lunch of fresh fish, fried plantains and local fruits. After lunch, you will have the opportunity to take a 20-30 minute hike with one of the village elders to learn about their medicinal plants. Then, in the village, you will have time to view or buy the exquisite hand-woven objects.

**PRICE: SEE PRICE LIST B**

**DURATION: 6 hours (Time may vary)**

**Minimum: 10 PAX**

**Maximum: 100 PAX**

**Recommended :**

**Comfortable clothes and Shoes,Hat,Sun block,Sunglasses**

**Camera,Umbrella or raincoat and**

**Money for souvenirs**

**Requirements:-**

**Includes:**

**Round-trip transportation, boat transfers, soft drinks.**

**Guide : English speaking. On demand German and French**

Panama  
GOLF Experience  
1 OR 2 DAYS BEST OF



PANAMA



RIO  
HATO



INFORMATION

### Santa Maria Golf & Country Club

Meticulously groomed to perfection, this 18-hole, par-72 golf course features rippling fairways, beautiful greens and sculpted bunkers that offer a challenge for scratch handicappers and novice golfers alike.

### Buenaventura Golf Club: Panama's Best Golf Course 2021.

Surrounded by the tropical beauty for which Panama is famous, our resort's Buenaventura Golf Club is an 18-hole Jack Nicklaus Design golf course with undulating fairways, white-sand bunkers and pristine greens - framed by beautiful, ancient Corotu trees. Club Highlights: Driving Range, equipment Rental, Provides Lessons, Putting Green Buenaventura Golf Club by Nicklaus Design - 18 holes , 7383 yards , Par for course: 72

NOTES

**PRICE: SEE PRICE LIST B**

**DURATION: 6 hours (Time may vary)**

**Minimum: 10 PAX**

**Maximum: 100 PAX**

**Recommended :**

**Comfortable clothes and Shoes,Hat,Sun block,Sunglasses**

**Camera,Umbrella or raincoat and**

**Money for souvenirs**

**Requirements:-**

**Includes:**

**Round-trip transportation, boat transfers, soft drinks.**

**Guide : English speaking. On demand German and French**